

Stabilized With Integral Block Valve

SV SERIES



Note: Shown with flange adaptor for round installations.

- Block valve and stabilized tap are joined by a coupling nut which allows easy installation without requiring rotation of the valve
- Slotted bolt holes allow for 2-1/8" and 2-1/4" bolt spacings
- Designed to reinforce the entire installation by shifting radial-stress load away from the NPT connections
- 0.375" bore for unrestricted passage of process gas
- Non-rotating stem tip standard on block valves
- Blow-out proof stem provides a secondary stem seal in the full open position
- Metal body-to-bonnet seal
- FKM o-ring seal and PTFE back-up ring below the stem threads to protect from corrosion and galling
- Includes PTFE gaskets and Carbon Steel bolts for manifold installation
- Optional dielectric barrier creates a non-conductive shield between the instrument and the orifice fitting
- **Patent pending**

SPECIFICATIONS

Materials	Zinc-Nickel plated Carbon Steel, 316 Stainless Steel*
Bolts	Carbon Steel
Connection	1/2" NPT-flange
Pressure rating	6,000 psi at 200 °F
Orifice	0.375"
Flow coefficient	C _v 3.0
Stem seal & type	All 316 Stainless Steel stems with FKM o-ring and PTFE back-up ring below the threads
Weight	Approximately 10.6 lb. (pair)

* All 316SS products meet the requirements of NACE MR0175/ISO 15156-3.

ORDERING INFORMATION			
SERIES	SV	Stabilized connector with integral block valve	
MATERIALS	C	Steel	S Stainless Steel
CONNECTOR TYPES	1	Stabilized connector pair with integral valve*	2 Stabilized connector pair with integral valve, flange adaptor**
OPTIONS†	DK1	One Piece Dielectric Gasket, Pair	DK2 PTFE Gasket with Dielectric Shim, Pair
	DK1-SS	One Piece Dielectric Gasket, Pair w/SS Bolts	DK2-SS PTFE Gasket with Dielectric Shim, Pair w/SS Bolts

Please consult your local NOSHOK Distributor or NOSHOK, Inc. for availability and delivery information.

† For more information on Dielectric Kits, see page 140

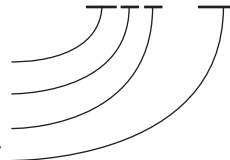
* For flat installations (orifice fitting)

** For round installations (orifice flange)

EXAMPLE

Series.....Connector with integral block valve
Material..... Steel
Connector type..... Stabilized connector pair with integral valve
Option..... One piece Dielectric gasket, pair

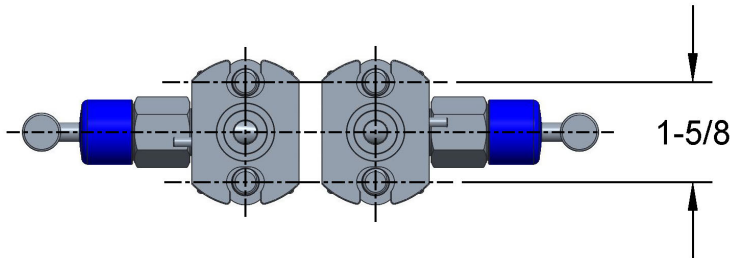
SVC1 - DK1



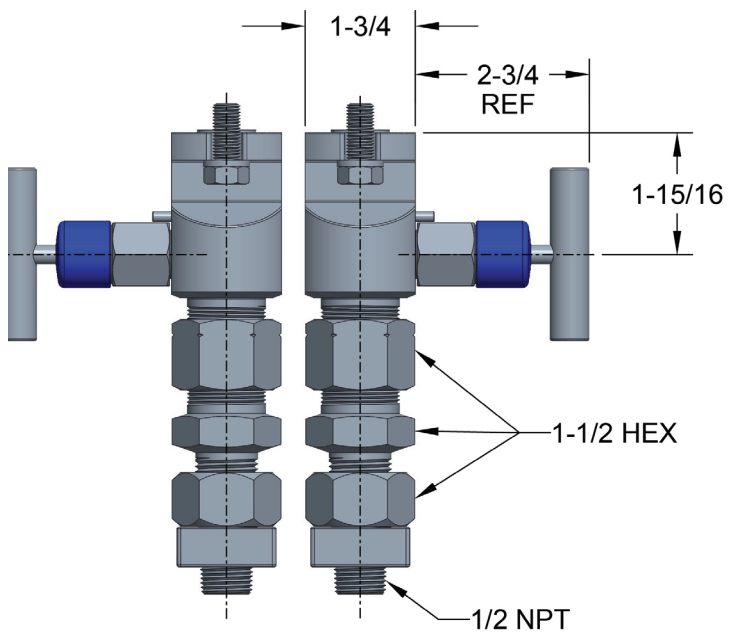
Connectors
Dimensions

Stabilized Connector with Integral Block Valve

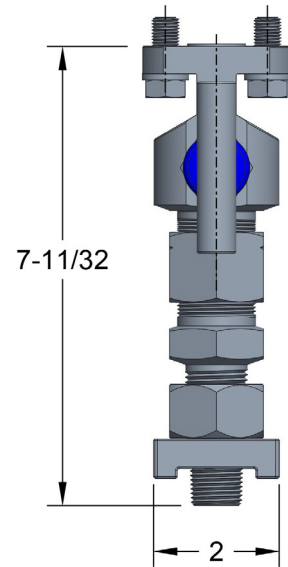
Top View



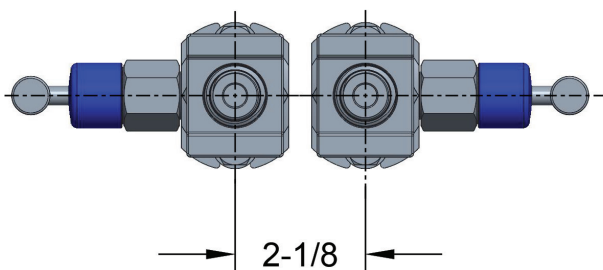
Front View



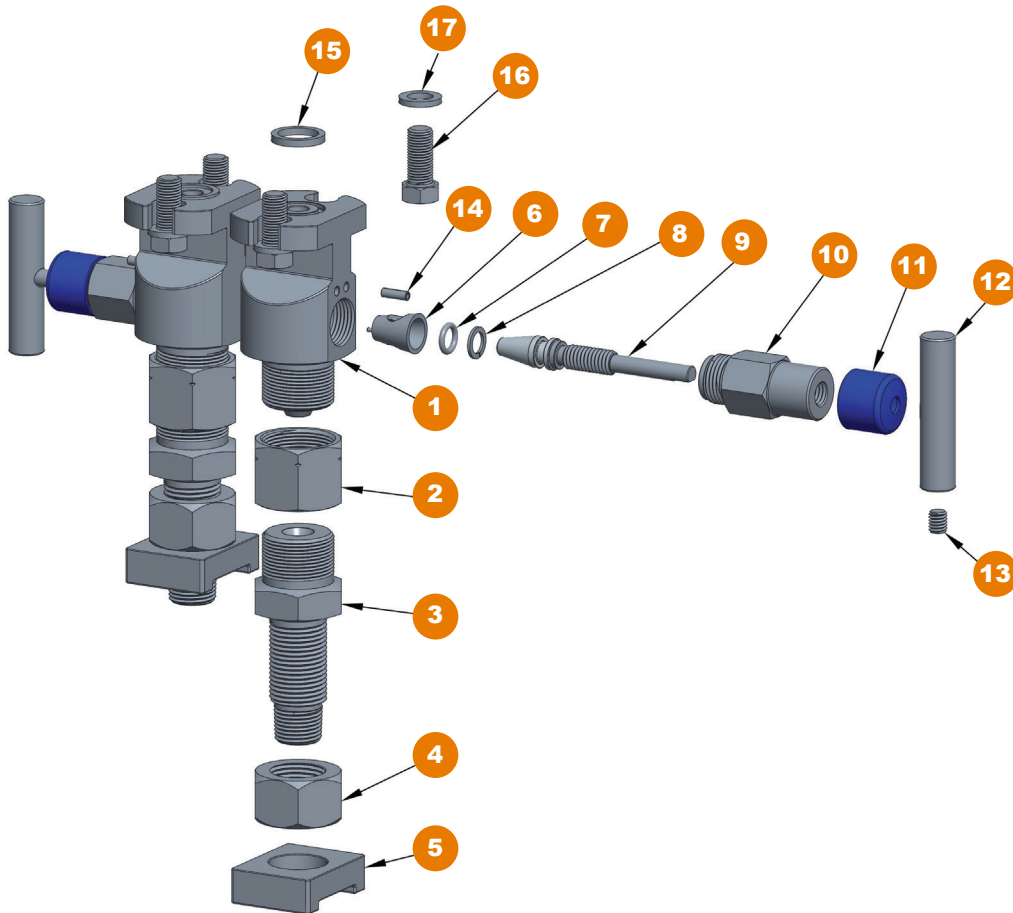
Side View



Bottom View



Stabilized Connector with Integral Block Valve



- 1 Stabilized valve body
- 2 Coupling nut
- 3 Tap body
- 4 Stabilized nut
- 5 Flange adapter
- 6 Soft seat
- 7 FKM o-ring
- 8 PTFE back-up ring
- 9 Non-rotating valve stem
- 10 Valve bonnet
- 11 Dust cap
- 12 Valve "T" handle
- 13 Set screw
- 14 Slotted spring pin
- 15 Gasket ring
- 16 Hex head bolt
- 17 Washer